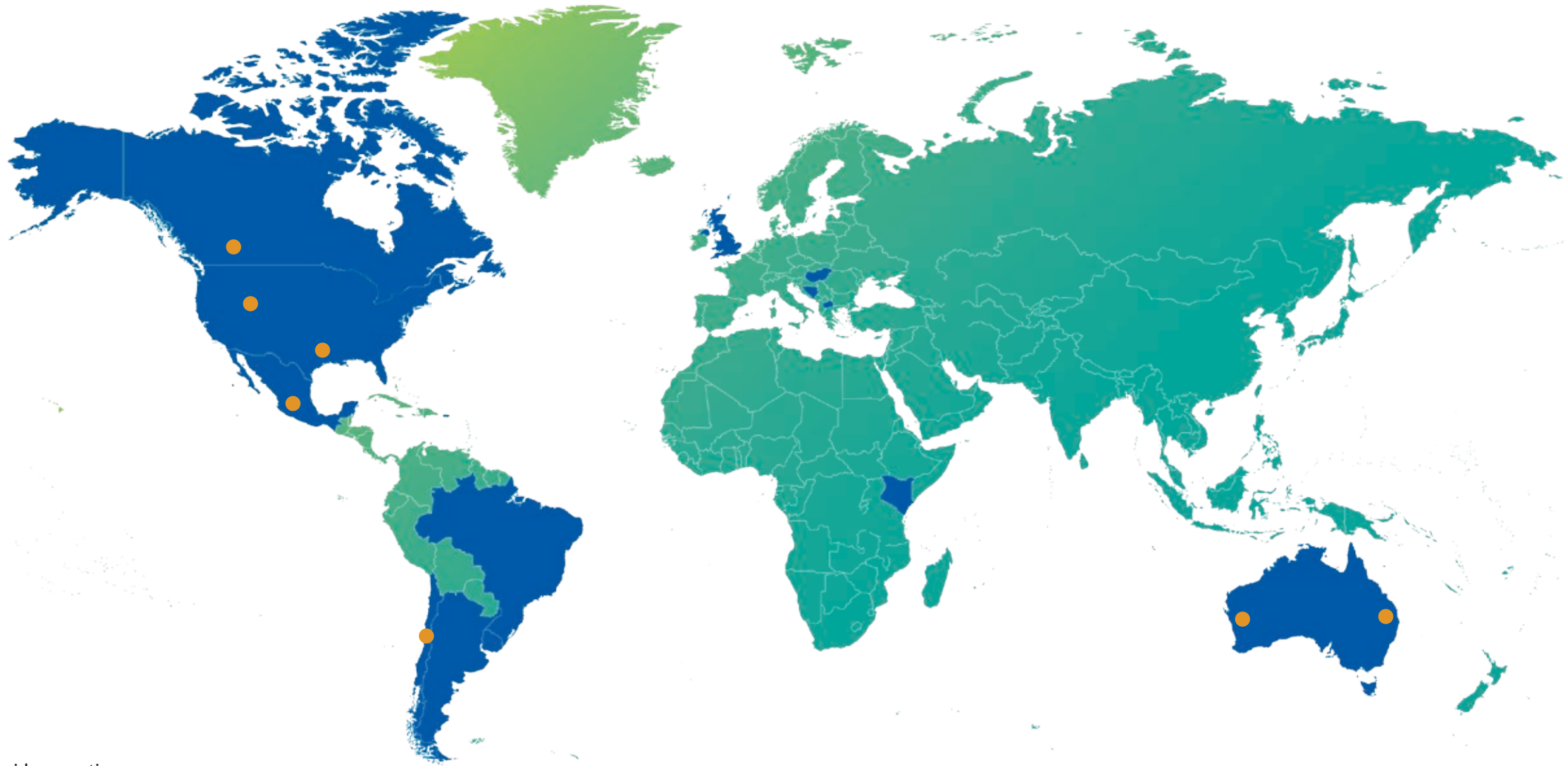




# CLINICS AND MEDICAL OFFICES

PERMANENT OR TEMPORARY

ATCO Espaciovil, is a company of the ATCO Group.



■ ATCO's worldwide operations.

# ATCO IN THE WORLD



Structures & Logistics



Pipelines & Liquids



Power generation

7

MODULAR CONSTRUCTION FACILITIES

CANADA- 1  
U.S.A.- 2

AUSTRALIA- 2  
CHILE- 1

MEXICO- 1

ATCO Espaciovil, integral modular solutions.

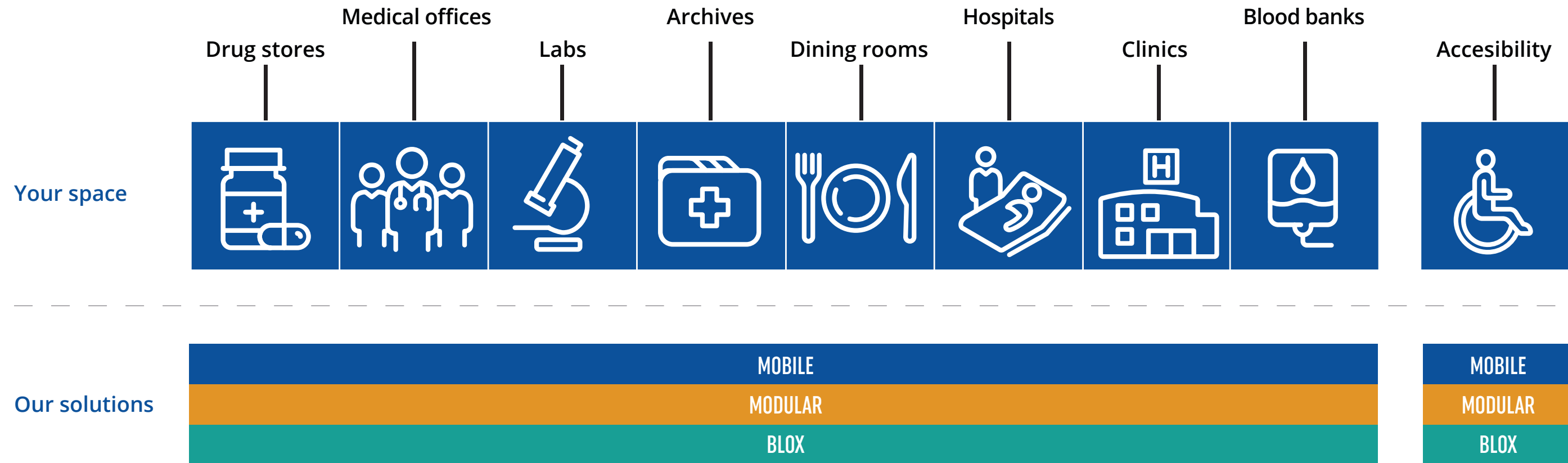
**ATCO** | ESPACIO MOVIL



WE BUILD THE **SPACES**,  
WHERE HANDS TAKE CARE  
OF OTHERS **WITH PASSION.**



## Your process, our starting point





# SPACES FOR WORKING AND LIVING

MOBILE

MODULAR

BLOX

MOBILE

## Offices and Dorms

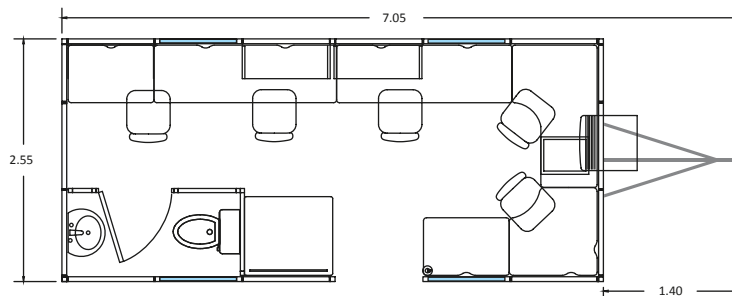
Prefabricated and transportable solutions designed to enable work spaces or provide on-site worker accommodation.

**ATCO** | ESPACIOMOVIL

### PREMIUM LINE



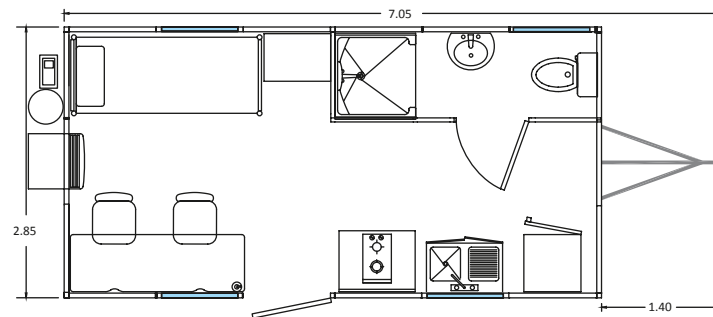
MODEL **UM 2568 SB**  
2.55 X 7.05 m. 5 A 9 PAX.



**INCLUDES:**

- Toilet and sink
- A / C of 1 ton (cold 220v.)
- 1 Storage drawer
- 2 open cabinets
- 4 Windows
- 4 double light contacts
- 4 telephone double contacts (2 lines)
- 1 drawing desk

MODEL **DORM 2868**  
2.85 X 7.05 m. 1 A 2 PAX.



**INCLUDES:**

- 1 bunk / single bed
- 1 ton A / C. (cold 220 v.)
- 1 work table
- 1 Closet
- Sink and fridge
- Electric grill
- Shower, toilet, sink combo
- 4 Windows

**Note: The models shown are a representative sample of the alternatives we can offer.**

ALL UNITS HAVE: Polyurethane insulation, vinyl tile floors, axle (s) and tires, 90 cm brackets (only in premium units, desks brackets, furniture, accessories, etc.), interior covering in laminated wood with aluminum frames. Reconfiguration prices are quoted based on the interior and exterior distribution.\* Financial plans through leasing.\* Floor plans shown are a graphic representation.

### Contract type:

- ✓ FOR SALE
- ✓ FOR RENT
- ✓ FOR RENT WITH PURCHASE OPTION
- ✓ FINANCING

### Benefits:

- PATENTED DESIGN.
- PRODUCED IN OUR PLANT.
- INTERIOR AND EXTERIOR RECONFIGURATION.
- HIGH QUALITY FINISHES.
- FURNITURE AND ACCESSORIES INTEGRATION.
- MODULAR GROWTH, PARALLEL, LINEAR AND PERPENDICULAR UNION.

### Ideal for:

- OFFICES
- SHOWROOMS
- STORAGE
- MEDICAL OFFICES
- DORMS

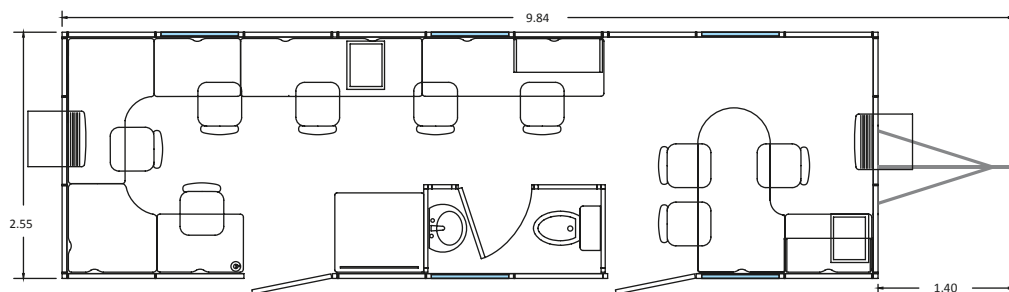
## Offices and Dorms

Permanent or temporary, mobile units, custom designed with high quality materials and finishings. Pre-manufactured in plant and built on-site, with ample interior spaces.

### PREMIUM LINE



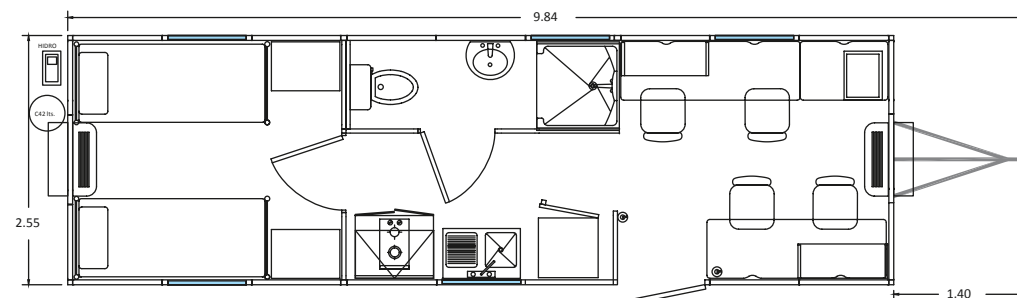
MODEL **UM 2596 PB**  
2.55 X 9.84 m. 7 A 9 PAX.



#### INCLUDES:

- Toilet and sink
- 2 A / C of 1 ton (cold 220v.)
- 2 Storage drawers
- 2 open cabinets
- 1 drawing desk
- 5 Windows
- 5 double light contacts
- 5 telephone double contacts (2 lines)

MODEL **DORM 2596**  
2.55 X 7.05 m. 1 A 2 PAX.



#### INCLUDES:

- 2 bunk / single beds
- 2 work tables
- 2 Closets
- Sink and fridge
- Electric grill
- 2 open cabinets
- 1 Storage drawer
- Shower, toilet, sink combo
- 5 Windows
- 2 A / C of 1 ton (cold 220v.)

**Note: The models shown are a representative sample of the alternatives we can offer.**

ALL UNITS HAVE: Polyurethane insulation, vinyl tile floors, axle (s) and tires, 90 cm brackets (only in premium units, desks brackets, furniture, accessories, etc.), interior covering in laminated wood with aluminum frames. Reconfiguration prices are quoted based on the interior and exterior distribution.\* Financial plans through leasing.\* Floor plans shown are a graphic representation.

#### Contract type:

- ✓ FOR SALE
- ✓ FOR RENT
- ✓ FOR RENT WITH PURCHASE OPTION
- ✓ FINANCING

#### Benefits:

- PATENTED DESIGN.
- PRODUCED IN OUR PLANT.
- INTERIOR AND EXTERIOR RECONFIGURATION.
- HIGH QUALITY FINISHES.
- FURNITURE AND ACCESSORIES INTEGRATION.
- MODULAR GROWTH, PARALLEL, LINEAR AND PERPENDICULAR UNION.

#### Ideal for:

- OFFICES
- SHOWROOMS
- STORAGE
- MEDICAL OFFICES
- DORMS

MOBILE

# Mobile Dorms

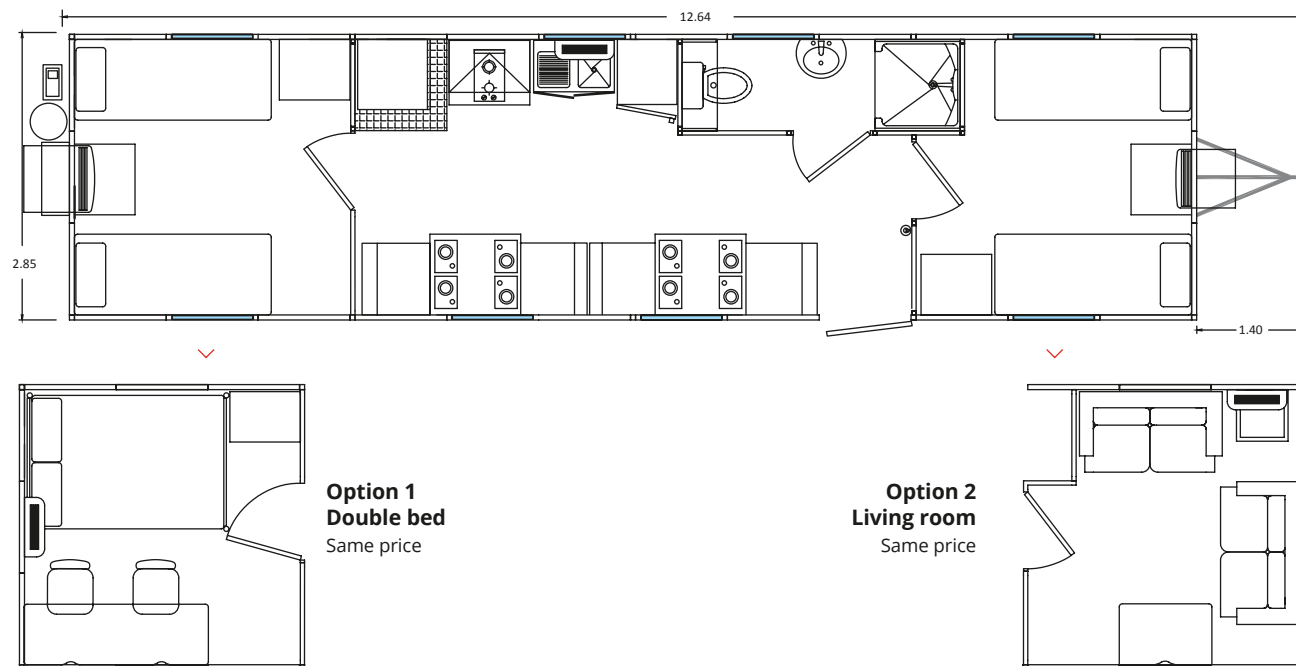
Prefabricated and transportable solutions, designed to enable work spaces or provide on-site worker accommodation.

## PREMIUM LINE



MODEL **DORM 28127**

2.55 X 7.05 m. 4 A 8 PAX.



### INCLUDES:

- 4 bunk / single beds
- Dining area
- 4 Closets
- Sink and fridge
- Electric grill
- Stacked washer and dryer
- Shower, toilet, sink combo
- 8 Windows
- 2 A / C 1 ton (cold 220v.)
- 1 Mini-Split 1 ton (cold 220v.)

### Contract type:

- ✓ FOR SALE
- ✓ FOR RENT
- ✓ FOR RENT WITH PURCHASE OPTION
- ✓ FINANCING

### Benefits:

- PATENTED DESIGN.
- PRODUCED IN OUR PLANT.
- INTERIOR AND EXTERIOR RECONFIGURATION.
- HIGH QUALITY FINISHES.
- FURNITURE AND ACCESSORIES INTEGRATION.
- MODULAR GROWTH, PARALLEL, LINEAR AND PERPENDICULAR UNION.

### Ideal for:

- OFFICES
- SHOWROOMS
- STORAGE
- MEDICAL OFFICES
- DORMS

**Note: The models shown are a representative sample of the alternatives we can offer.**

ALL UNITS HAVE: Polyurethane insulation, vinyl tile floors, axle (s) and tires, 90 cm brackets (only in premium units, desks brackets, furniture, accessories, etc.), interior covering in laminated wood with aluminum frames. Reconfiguration prices are quoted based on the interior and exterior distribution.\* Financial plans through leasing.\* Floor plans shown are a graphic representation.



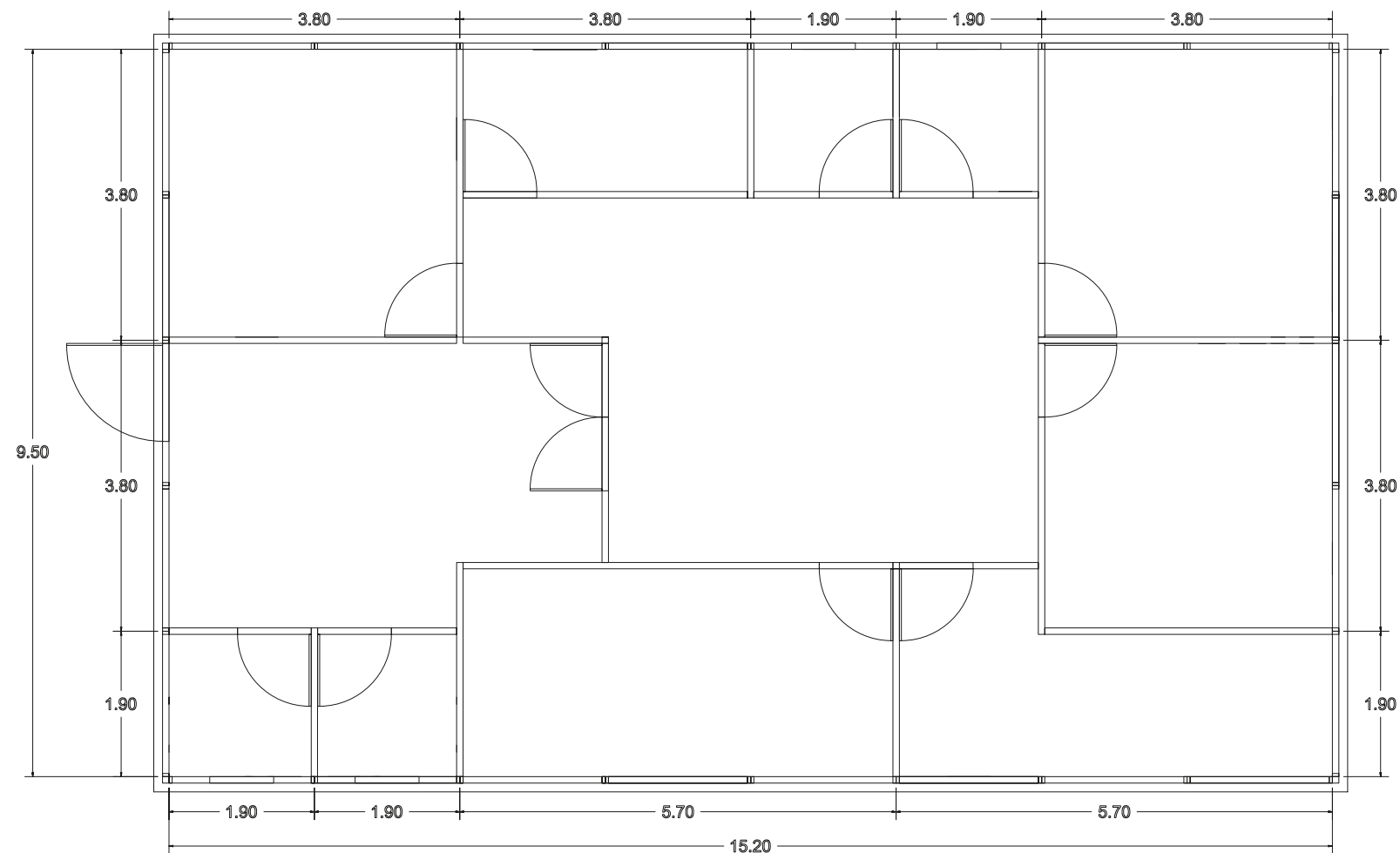
MODULAR

# Modular Clinics

A new time-cost effective vision of smart spaces, easy for transportation and installation under high quality standards.

MODEL **5W 8L 1H**

EXTERIOR DIMENSIONS: **W** 9.50 m. **L** 15.20 m. **H** 3.47 m.



**Note: The models shown are a representative sample of the alternatives we can offer.**

NOTE: Products with technical characteristics that allow as a maximum: wind speeds: 110 km/h, maximum weight per square meter on the second-storey of 120kg/m<sup>2</sup>. These line of products require a concrete base, as ground preparation which is not included.  
\* Financial plans through leasing.

## Contract type:

✓ FOR SALE

## Benefits:

- STEEL STRUCTURES WITH THERMIC & ACOUSTIC INSULATION PANELS.
- 100% ASSEMBLED AND DESMOUNTABLE, FOR SINGLE AND DOUBLE-STOREY BUILDINGS.
- EASY TRANSPORTATION AND ASSEMBLY, WHICH ALLOWS INSTALLATION IN THE MOST REMOTE PLACES.

## Ideal for:

- OFFICES
- SHOWROOMS
- STORAGE
- MEDICAL OFFICES
- DORMS

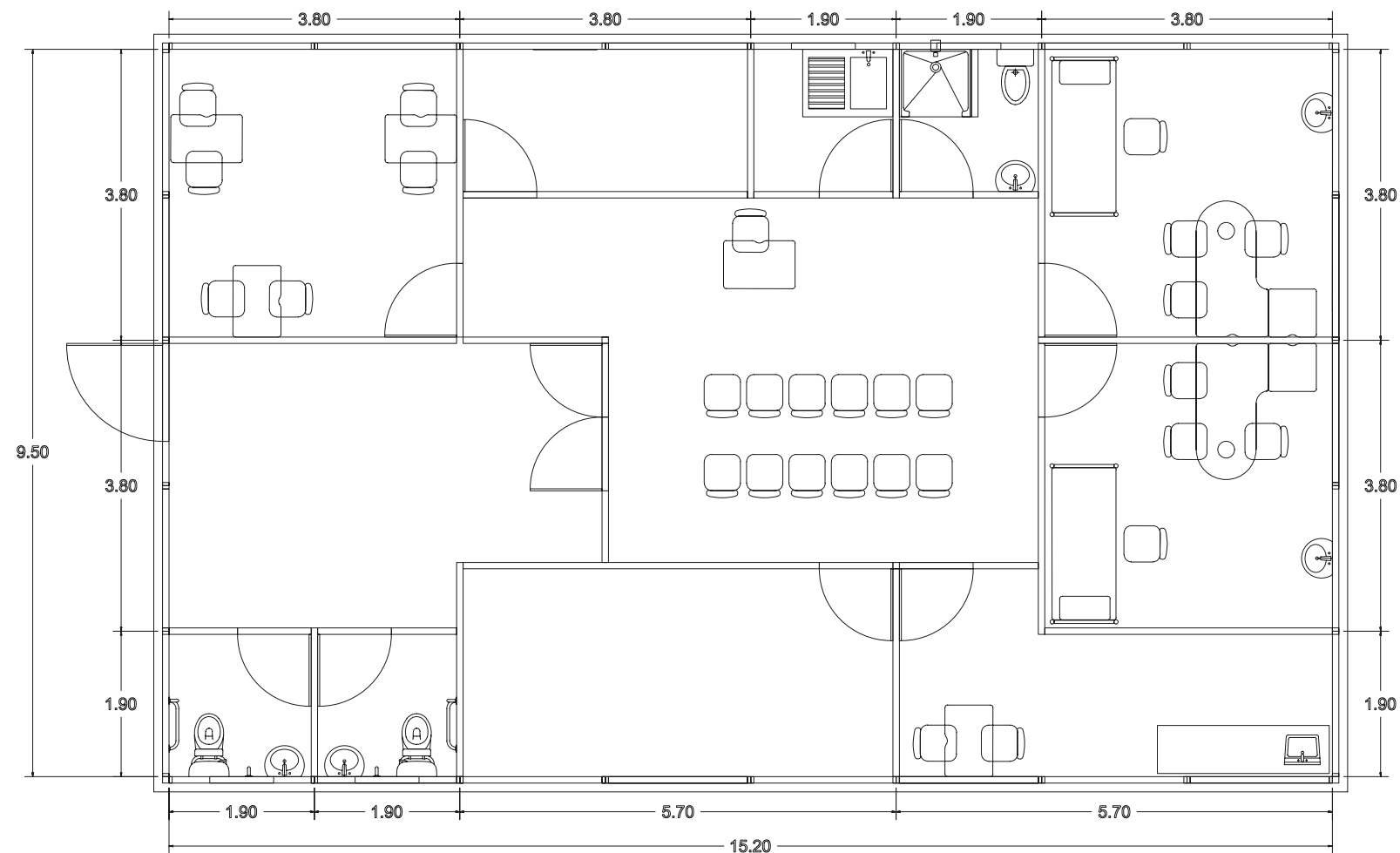
MODULAR

# Modular Clinics

A new time-cost effective vision of smart spaces, easy for transportation and installation under high quality standards.

MODEL **5W 8L 1H**

EXTERIOR DIMENSIONS: **W** 9.50 m. **L** 15.20 m. **H** 3.47 m.



## Contract type:

✓ FOR SALE

## Benefits:

- STEEL STRUCTURES WITH THERMIC & ACOUSTIC INSULATION PANELS.
- 100% ASSEMBLED AND DESMOUNTABLE, FOR SINGLE AND DOUBLE-STOREY BUILDINGS.
- EASY TRANSPORTATION AND ASSEMBLY, WHICH ALLOWS INSTALLATION IN THE MOST REMOTE PLACES.

## Ideal for:

- OFFICES
- SHOWROOMS
- STORAGE
- MEDICAL OFFICES
- DORMS

**Note: The models shown are a representative sample of the alternatives we can offer.**

NOTE: Products with technical characteristics that allow as a maximum: wind speeds: 110 km/h, maximum weight per square meter on the second-storey of 120kg/m<sup>2</sup>. These line of products require a concrete base, as ground preparation which is not included.  
\* Financial plans through leasing.

Modular Clinic. Guatemala.



MOBILE



MODULAR

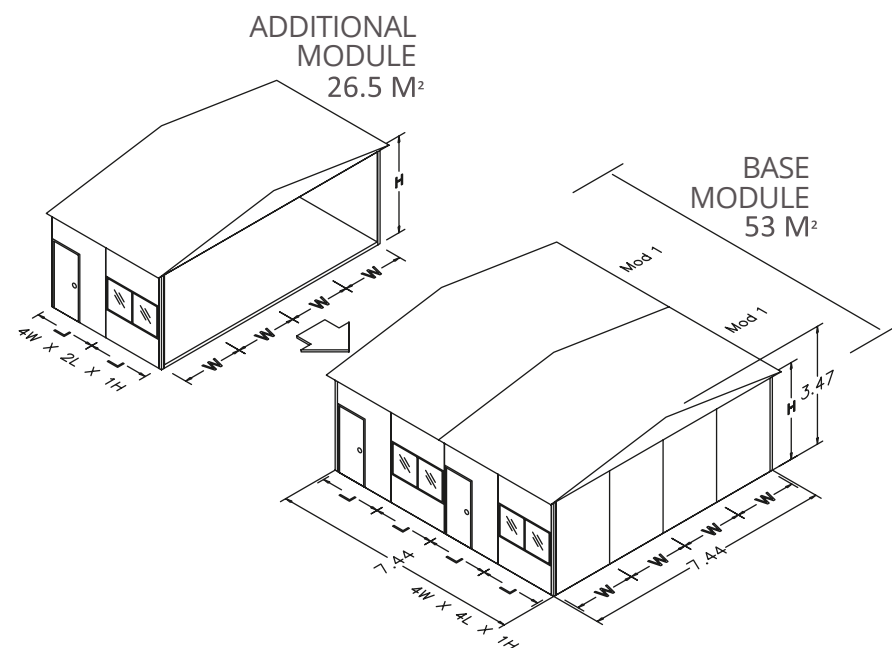
# Modular Buildings

Our modular system adapts to the required architectural spaces; as it is manufactured entirely in our manufacturing plant; strict quality controls are applied in its process.

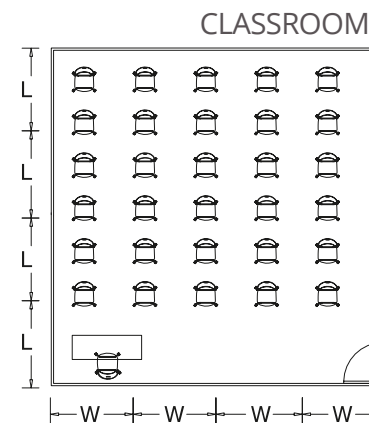
The **fastest and smartest** way for construction.

MODEL **4W 4L 1H**

EXTERIOR DIMENSIONS: **W** 7.44 m. **L** 7.44 m. **H** 3.47 m.



Examples.



**Note: The models shown are a representative sample of the alternatives we can offer.**

NOTE: Products with technical characteristics that allow as a maximum: wind speeds: 110 km/h, maximum weight per square meter on the second-storey of 120kg/m2. These line of products require a concrete base, as ground preparation which is not included.  
\* Financial plans through leasing.

## Contract type:

- ✓ FOR SALE
- ✓ FOR RENT
- ✓ FOR RENT WITH PURCHASE OPTION
- ✓ FINANCING

## Benefits:

- PATENTED DESIGN.
- PRODUCED IN OUR PLANT.
- INTERIOR AND EXTERIOR RECONFIGURATION.
- HIGH QUALITY FINISHES.
- FURNITURE AND ACCESSORIES INTEGRATION.
- MODULAR GROWTH, PARALLEL, LINEAR AND PERPENDICULAR UNION.

## Ideal for:

- OFFICES
- SHOWROOMS
- STORAGE
- MEDICAL OFFICES
- DORMS



MODULAR

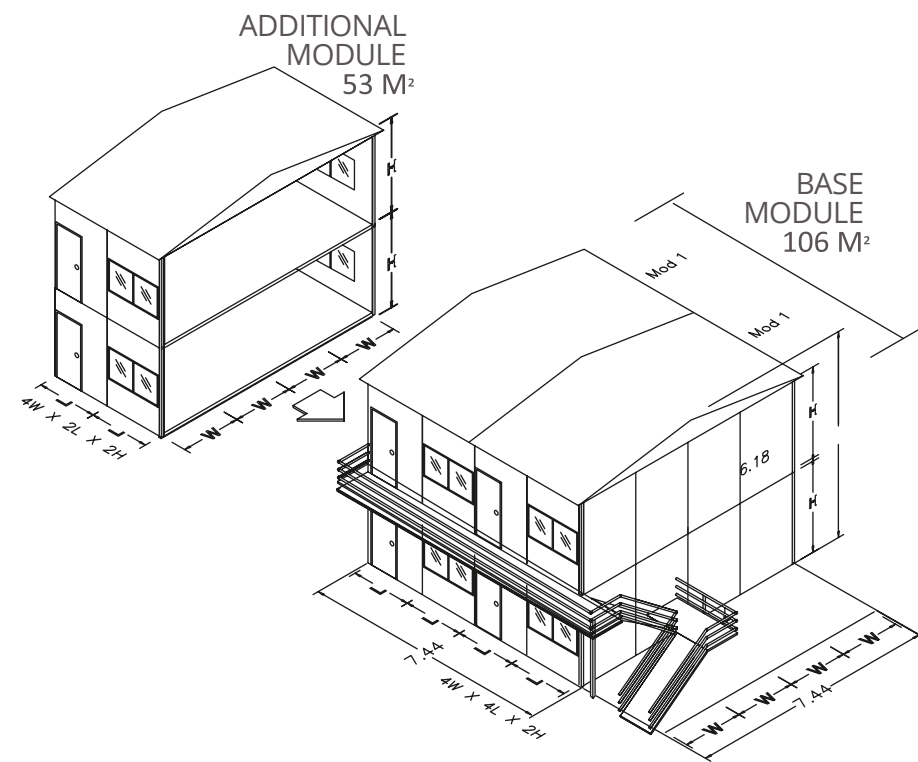
# Modular Buildings

The construction of the future due to its energy efficiency, resource saving and possibility of modular expansion, at the time you require it.

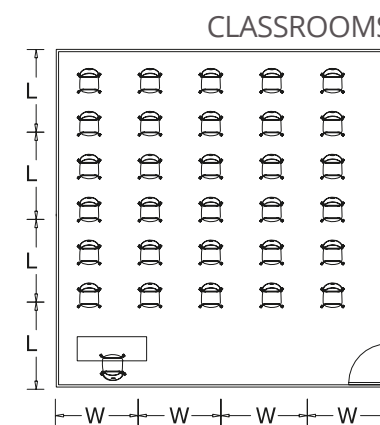
The **fastest and smartest** way for construction.

MODELO **4W 4L 2H**

EXTERIOR DIMENSIONS: **W** 7.44 m. **L** 7.44 m. **H** 6.18 m.



Examples.



**Note: The models shown are a representative sample of the alternatives we can offer.**

NOTE: Products with technical characteristics that allow as a maximum: wind speeds: 110 km/h, maximum weight per square meter on the second-storey of 120kg/m<sup>2</sup>. These line of products require a concrete base, as ground preparation which is not included.  
\* Financial plans through leasing.

## Contract type:

- ✓ FOR SALE
- ✓ FOR RENT
- ✓ FOR RENT WITH PURCHASE OPTION
- ✓ FINANCING

## Benefits:

- PATENTED DESIGN.
- PRODUCED IN OUR PLANT.
- INTERIOR AND EXTERIOR RECONFIGURATION.
- HIGH QUALITY FINISHES.
- FURNITURE AND ACCESSORIES INTEGRATION.
- MODULAR GROWTH, PARALLEL, LINEAR AND PERPENDICULAR UNION.

## Ideal for:

- OFFICES
- SHOWROOMS
- STORAGE
- MEDICAL OFFICES
- DORMS

MODULAR

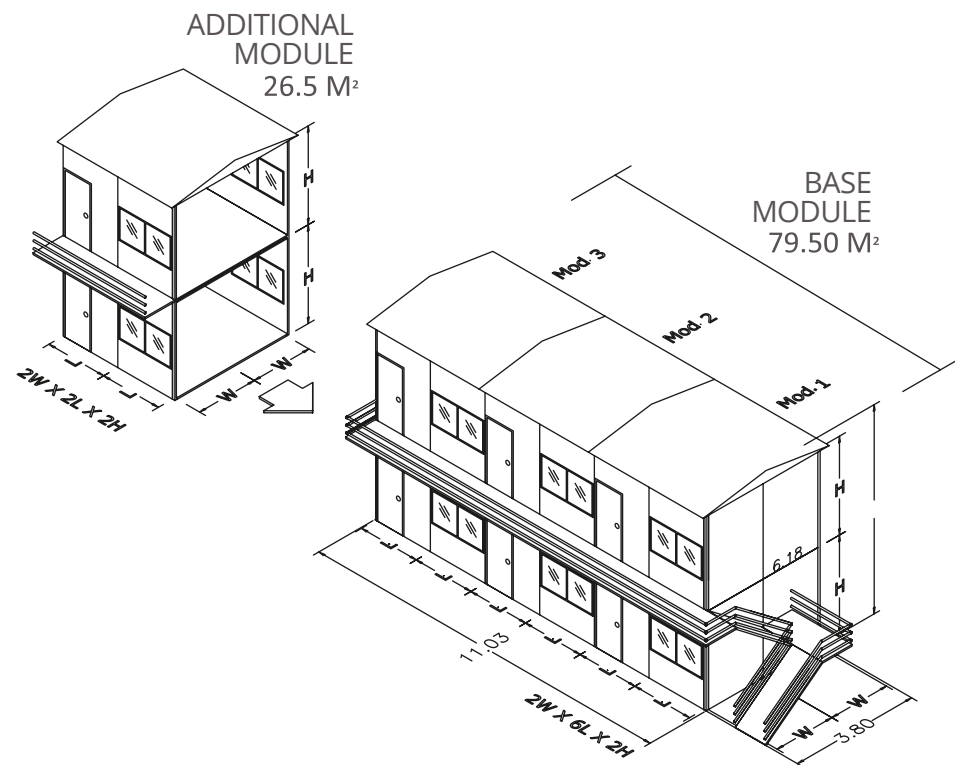
# Modular Buildings

An ideal solution for **faster, smarter, spacious, comfortable and accessible homes and workspaces.**

The **fastest and smartest** way for construction.

MODEL **2W 6L 2H**

EXTERIOR DIMENSIONS: **W** 7.44 m. **L** 7.44 m. **H** 6.18 m.



Examples.



**Note: The models shown are a representative sample of the alternatives we can offer.**

NOTE: Products with technical characteristics that allow as a maximum: wind speeds: 110 km/h, maximum weight per square meter on the second-storey of 120kg/m<sup>2</sup>. These line of products require a concrete base, as ground preparation which is not included.  
\* Financial plans through leasing.

## Contract type:

- ✓ FOR SALE
- ✓ FOR RENT
- ✓ FOR RENT WITH PURCHASE OPTION
- ✓ FINANCING

## Benefits:

- PATENTED DESIGN.
- PRODUCED IN OUR PLANT.
- INTERIOR AND EXTERIOR RECONFIGURATION.
- HIGH QUALITY FINISHES.
- FURNITURE AND ACCESSORIES INTEGRATION.
- MODULAR GROWTH, PARALLEL, LINEAR AND PERPENDICULAR UNION.

## Ideal for:

- OFFICES
- SHOWROOMS
- STORAGE
- MEDICAL OFFICES
- DORMS

MODULAR

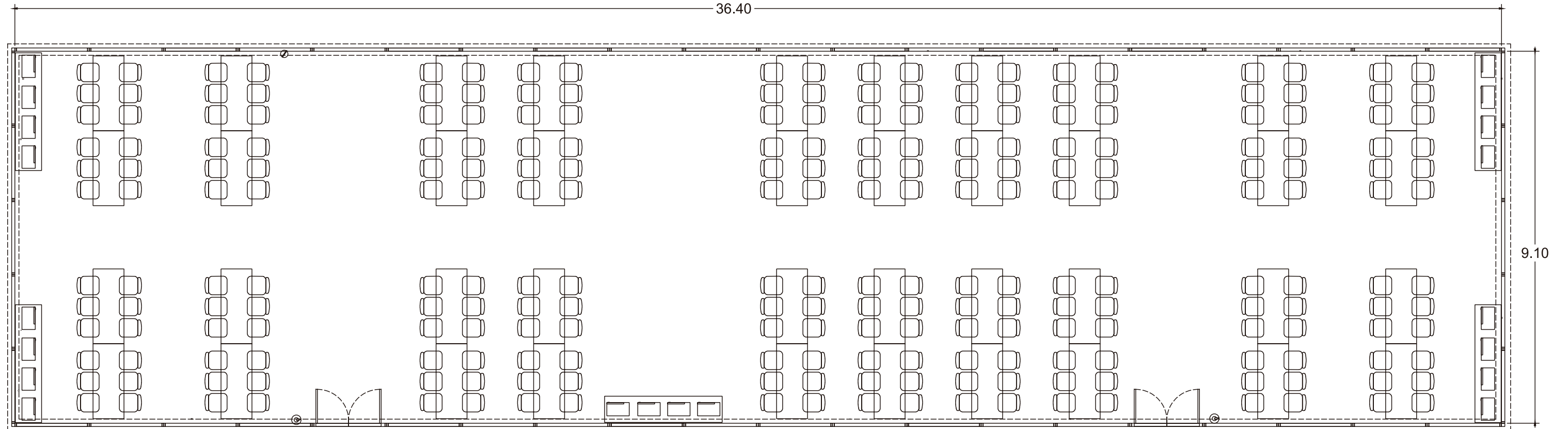
## Modular spaces

The construction of the future due to its energy efficiency, resource saving and possibility of modular expansion, at the time you require it.

**ATCO**

ESPACIO MOVIL

## DINING AREA



\* Floor plan shown as a graphic representation, the internal and external distribution is defined based on client requirements.

MODULAR

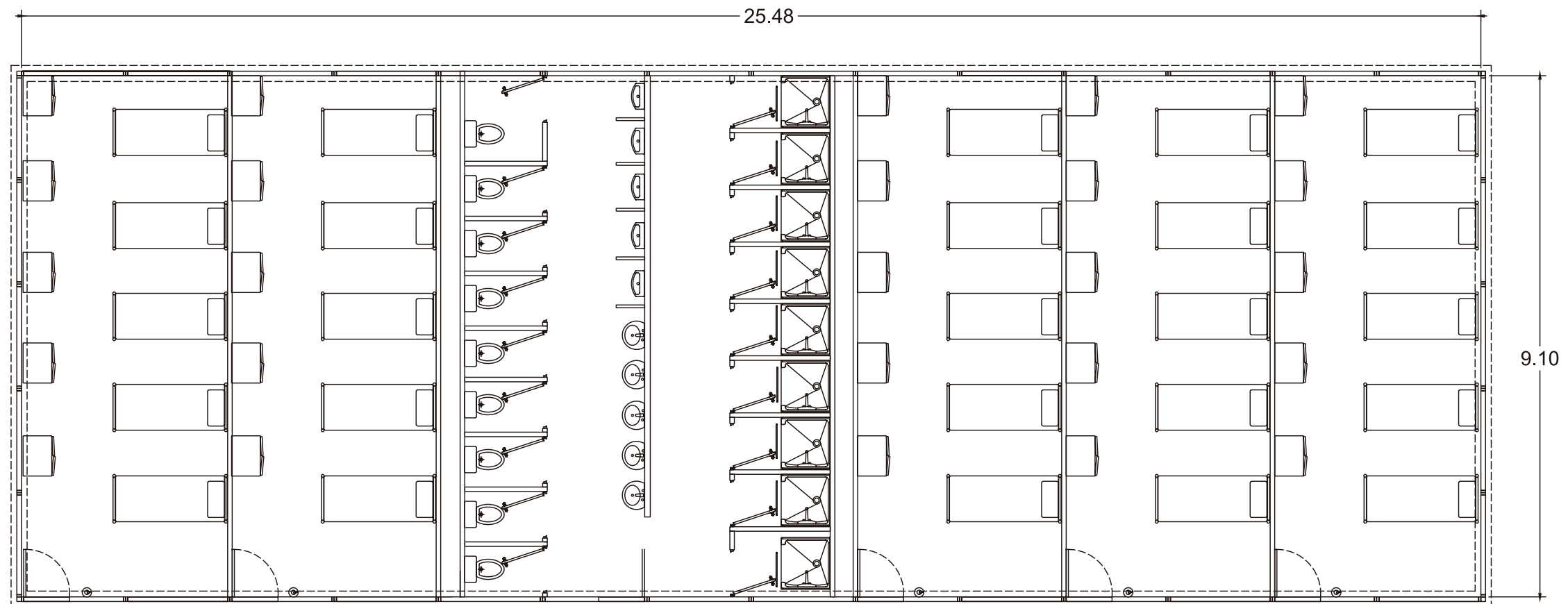
**ATCO**

ESPACIO MOVIL

## Modular spaces

Your projects development, from design, to turnkey solutions.

## RESTROOMS AND DORMS



\* Floor plan shown as a graphic representation, the internal and external distribution is defined based on client requirements.





# OUR PASSION AND EXPERIENCE AT YOUR SERVICE

ATCO Espaciovil remote workforce housing and work solutions.



**MOBILE**





**MODULAR**





**MODULAR**



